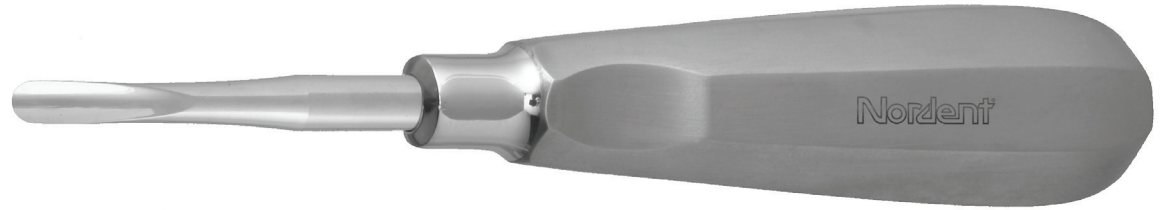


General Info

Nordent offers a complete selection of American Made Elevators for every extraction procedure. You will find all of your "old favorites" and several unique patterns listed in this section. We can also assist you with special modification and design services if you have specific application requirements.



Every Nordent Elevator is a blend of space-age technology and old-world craftsmanship. We use only the finest domestic high carbon surgical stainless steel for our tips. Each tip is machined to a basic contour and then hand formed and shaped. Our proprietary hardening process combines high temperature and cryogenic technologies to maximize load and torque resistance while maintaining a long lasting sharpness. Hardened tips are fused into our light weight, all stainless steel "Form Fit" handle and then meticulously finished by our craftsmen to deliver an extremely durable and adaptable Elevator that can be sterilized by any method and will provide years of service to your practice.

You will find many of our Elevators are additionally available with serrated blades or titanium nitride coating.



Standard Blade

Our Standard Blade has sharpened working surfaces and a highly-polished finish for smoother adaptation. Our Standard Blades are at the core of the serrated and Titanium Coated modifications.



Serrated Blade

Serrations add additional "bite" to the sides of the gouge to enhance lateral manipulation of the tooth during extraction. The sharp end of the blade is not serrated. Serrations can not be combined with Titanium Coated option.



Titanium Coated Blade

Titanium Nitride (TiN) coating increases the surface hardness of instrument tips to further extend sharpness retention and reduces surface abrasion for smoother adaptation and quicker healing. Can not be combined with "serrated" blade option.

Elevators

Straight



Apexo #301

Straight with a 2.5mm blade width.

E301
E301SR (serrated)
E301T (Titanium Coated)



#301V Modified Apexo 301 for Children and Veterinary procedures has a 2.0mm blade width.

E301V



#81 Modified Apexo straight with a 3.0mm blade width.

E81
E81SR (serrated)
E81T (Titanium Coated)



Elevator #80 Straight gouge with a 3.0mm blade width.

E80
E80SR



Heidbrink #40 Straight gouge with a 3.0mm blade width.

E40
E40SR (serrated)
E40T (Titanium Coated)



Heidbrink #41 Straight gouge with a 3.7mm blade width.

E41
E41SR (serrated)
E41T (Titanium Coated)



Heidbrink #1 Straight gouge with a 4.5mm blade width.

E1
E1SR (serrated)



Stout #11A Gouge with tapered blade.

E11A



Cogswell #11 Flat faced tapered blade.

E11

Curved Gouge



Coupland #1 Gouge with a 3.0mm blade width and a square tip. The 10° back curve improves adaptation.

ECO1



Coupland #2 Gouge with a 3.5mm blade width and a square tip. The 10° back curve improves adaptation.

ECO2



Coupland #3 Gouge with a 4.0mm blade width and a square tip. The 10° back curve improves adaptation.

ECO3



Seldin #34 Gouge with a 4.7mm blade width. Has a gentle back curve to improve adaptation.

E34

E34SR (serrated blade)
E34T (Titanium Coated)



Back Action



Apexo #303
Back-Action bend with a 2.5mm blade width.

E303

E303SR (serrated)



Elevator #46R
Back-Action bend with a 3.2mm blade width.

E46R

E46RSR (serrated)

E46RT (Titanium Coated)



Elevator #77R
Back-Action bend with a 3.7mm blade width.

E77R

E77RSR (serrated)

E77RT (Titanium Coated)



Krough #36B
Back-Action bend with a spear shaped blade.

E36B

Seldin #34S Gouge with a 3.7mm blade width. Has a gentle back curve to improve adaptation.

E34S

E34SSR (serrated blade)

E34ST (Titanium Coated)

Elevators

Flag Shape



Cryer #25
Large flag - Left.

E25



Cryer #26
Large flag - Right.

E26



Cryer #44
Medium flag - Left.

E44
E44T (Titanium Coated)



Cryer #45
Medium flag - Right.

E45
E45T (Titanium Coated)



Cryer #64
Small flag - Left.

E64



Cryer #65
Small flag - Right.

E65

Crane Pick



Seldin #1L
Left.

E1L



Seldin #1R
Right.

E1R



Seldin #4L
Left.

E4L



Seldin #4R
Right.

E4R



Crane Pick #8
Four sided blade used
for segmenting teeth.

E8

Woodward



Modified Woodward #190
Left.

E190
E190T



Modified Woodward #191
Right.

E191
E191T



Woodward #15
Left..

E15



Woodward #16
Right.

E15

Miller



Miller #71 Left Shank
& compound blade angle
allows easy access to
3rd molars.

E71



Miller #72 Right Shank
& compound blade angle
allows easy access to
3rd molars.

E72



Miller #73
Left.

E73



Miller #74
Right.

E74

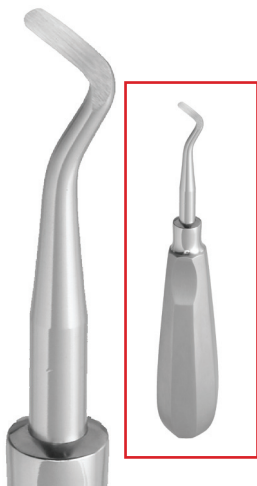
Elevators

Potts



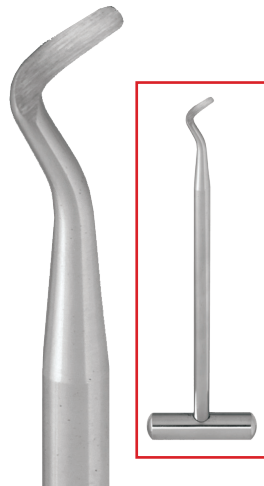
Potts #6
With Hand Form
handle. - Left

E6



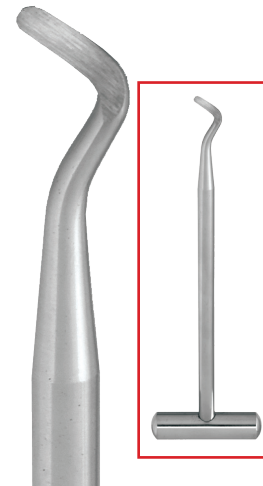
Potts #7
With Hand Form
handle. - Right

E7



Potts #6
Cross Bar Handle -
Left.

E6X shown E6XSR (serrated)



Potts #7
Cross Bar Handle -
Right.

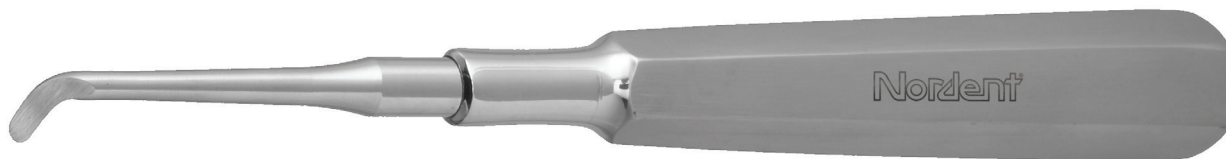
E7X shown E7XSR (serrated)

Warwick James



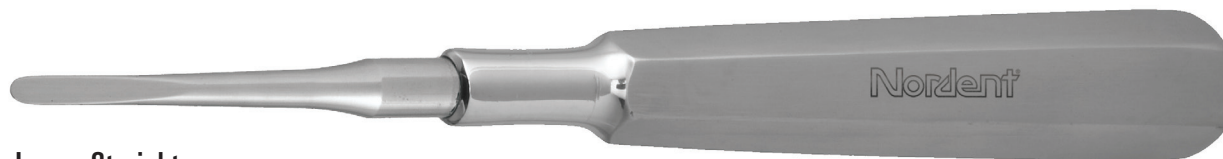
Warwick James Left
"English Pattern".

EWJL



Warwick James Right
"English Pattern".

EWJR



Warwick James Straight
"English Pattern".

EWJS