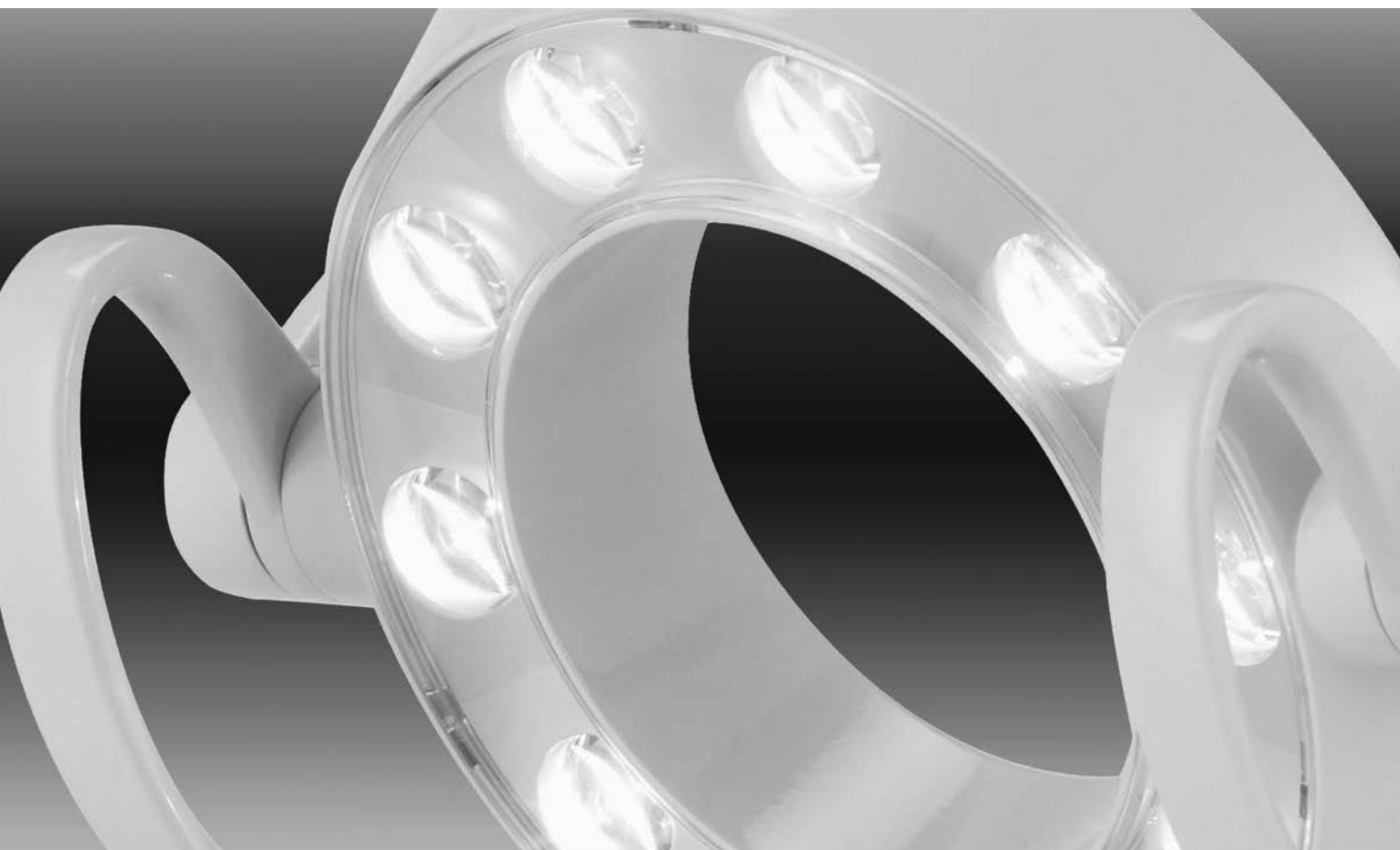


Operator Lights



OPERATOR LIGHTS

Suspension Posts

Ceiling & Track Light



PP. 78-79

LED Lights

Bel-Halo LED



PP. 80-81

Clesta LED



PP.82-83

Halogen Lights

Clesta



PP. 84-85

Operatory Lights Ceiling & Track Light Suspension Posts

Model AL905 Bel-Halo LED



Track Light Suspension Posts			
For Mounting Bel-Halo LED (Model AL905) & Clesta LED (Model AL305) Lights			
Part Number	For Operatory Ceiling Height	Post Length (Inches)	
LPTTG8	8 ft	15	
LPBTG8.5	8-1/2 ft	20-7/8	
LPBTG9	9 ft	26-3/4	
LPBTG9.5	9-1/2 ft	33	
LPBTG10	10 ft	39-3/8	

Model AL305 Clesta LED



Model AL515T Clesta



Track Light Suspension Posts			
For Mounting Clesta (Model AL515T) Light			
Part Number	For Operatory Ceiling Height	Post Length (Inches)	
LPTT8	8 ft	15	
LPTT8.5	8-1/2 ft	20-7/8	
LPTT9	9 ft	26-3/4	
LPTT9.5	9-1/2 ft	33	
LPTT10	10 ft	39-3/8	

OPERATORY LIGHTS

Operatory Lights Ceiling & Track Light Suspension Posts

Model AL902 Bel-Halo LED



Ceiling Light Suspension Posts			
For Mounting Bel-Halo LED (Model AL902) & Clesta LED (Model AL302) Lights			
Part Number	For Operatory Ceiling Height	Post Length (Inches)	
LPCCG8	8 ft	13-3/8	
LPCCG8.5	8-1/2 ft	20	
LPCCG9	9 ft	26-3/4	
LPCCG9.5	9-1/2 ft	33	
LPCCG10	10 ft	39-3/8	

Model AL302 Clesta LED

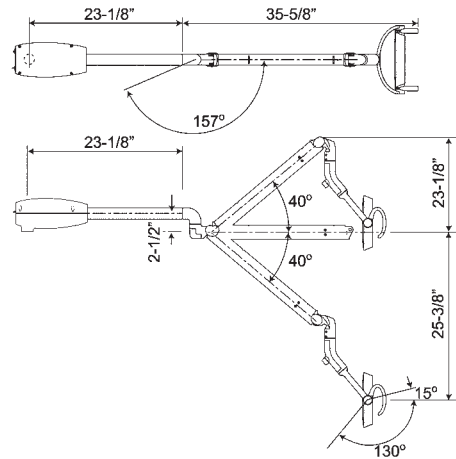


Model AL512T Clesta

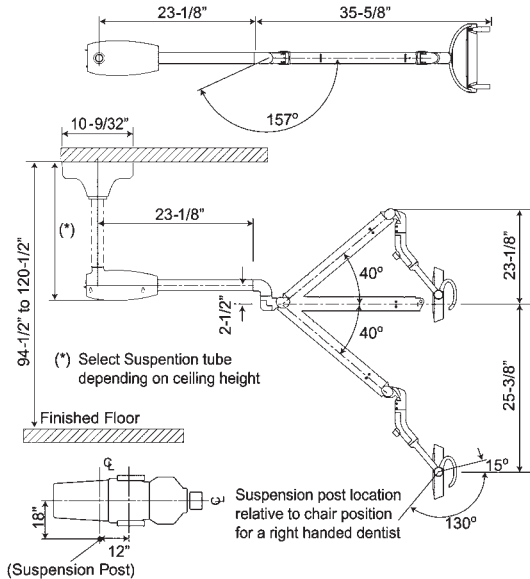


Ceiling Light Suspension Posts			
For Mounting Clesta (Model AL512T) Light			
Part Number	For Operatory Ceiling Height	Post Length (Inches)	
LPCC8	8 ft	13-3/8	
LPCC8.5	8-1/2 ft	20	
LPCC9	9 ft	26-3/4	
LPCC9.5	9-1/2 ft	33	
LPCC10	10 ft	39-3/8	

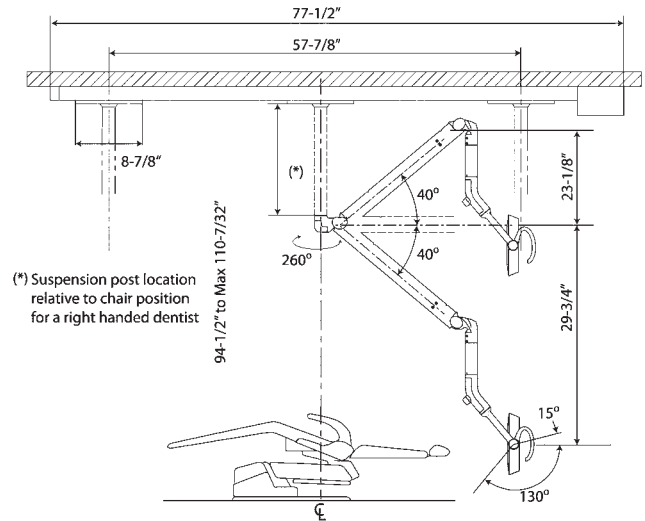
Bel-Halo Unit Mount Light: Models AL901 & AL901R



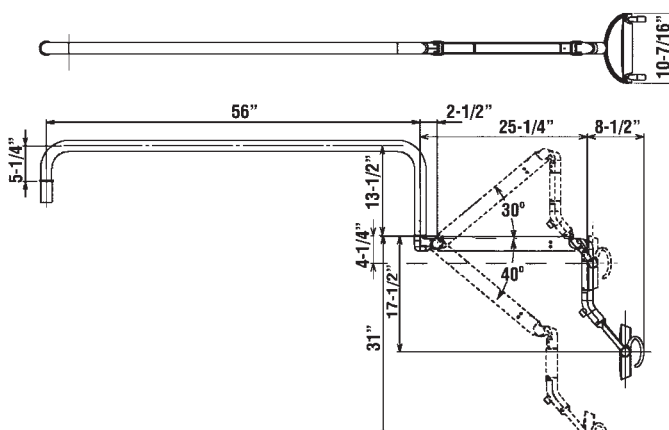
Bel-Halo Ceiling Mount Light: Model AL902



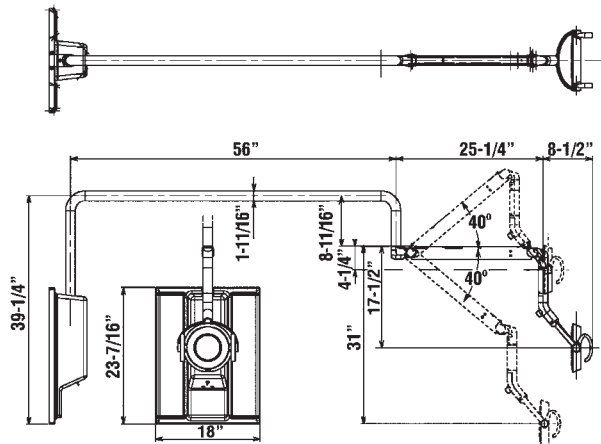
Bel-Halo Track Mount Light: Model AL905



Bel-Halo Cabinet Mount Light: Model AL907



Bel-Halo Wall Mount Light: Model AL908



Operatory Lights Bel-Halo


Bel-Halo LED Dental Light			
Model	Mounting Type	Note	
AL901	Post Mounted Light, LT. GRAY	Specify Left or Right Hand User (Post not included)	
AL901R	Post Mounted Light, WHITE	Specify Left or Right Hand User (Post not included)	
AL902	Ceiling Mounted Light	Specify Left or Right Hand User (Specify 8', 8.5', 9', 9.5' or 10' Ceiling Height)	
AL905	Track Mounted Light	(Specify 8', 8.5', 9', 9.5' or 10' Ceiling Height)	
AL907	Cabinet Mounted Light	(Mounting Kit not included, see "Light Accessories")	
AL908	Wall Mounted Light	(Includes Mounting Plate and Post)	
EVG3532B	L-R Swing Mounted Light	(Includes Curved Post, Swing Arm & B50N/B50/B20N Type Chair Adapter)	
BDS2536N	Curved Post Light for BDS OTP Units	(Includes Curved Post. "N" version can be mounted on BDS2500, BDS2510, and BDS2520 ONLY)	
QDU5631	L-R Swing Mounted Stand-Alone Light for Quolis® Chairs	(Includes Curved Post, Swing Arm & Q5000 Chair Adapter)	
EVG3536N	Curved Post Light for EVG OTP Units	(Includes Curved Post. "N" version can be mounted on EVG3500Q, 3500B, 3510Q, 3510B, 3520Q & 3520B ONLY.)	

Options			
8482B (White only)	48" Straight Light Post with plastic bushing for mounting Belmont post mounted lights to chairs w/o units (requires chair adapter)		
91200HH	Factory Installation Option for Mounting Bel-Halo AL907 to D4RH Cabinet (ETL Listing. Must purchase AL907)		
91201HH	Field Installation Kit for Mounting Bel-Halo AL907 to D4RH Cabinet (no ETL Listing. Must purchase AL907)		
LMKB20KIT (White only)	Light Mount Kit for X-Calibur Series and PROII chairs (includes 8482B 48" light post and 8493B chair adapter)		
1G02WLA0	Mirror Kit (Grey)		
1G02WMA0	Mirror Kit (White)		
EVG0012 (Grey only)	Straight Post Assembly for attaching Post Mounted Lights onto EVOGUE PMU ONLY		
BDS0012 (White only)	24" Straight Light Post with plastic bushing for mounting Belmont post mounted lights to BDS2500, 2510 and 2520 ONLY		
DS0012-36IN (White only)	36" Straight Light Post with plastic bushing for mounting Belmont post mounted lights to BDU500, 510, 600 and 610 ONLY		

Standard Features

- Cool, natural white light for correct color rendering at any intensity setting. Touchless ON/OFF and composite safe mode activation.
- Rectangular Light Pattern: 3-1/8" x 5-7/8" at a focal distance of 25-5/8"
- Stepless Light Intensity Range:

	High Intensity	Composite Safe Mode	Low Intensity
Light Output:	2,970 FTC	510 FTC	370 FTC
Color Temperature Range:	5000°K		
Output Voltage:	20V		



Bel-Halo Mirror Option

- Correct color rendering at all intensity settings
- Smooth, 3-Axis positioning easily illuminates patient oral cavity
- Activate light & composite safe mode with touchless sensor
- Input Voltage: 120 V / 60Hz AC
- Bulb Type: LED, 2W (x10)
- Adapter for Belmont post mounted lights included with AL901 & 901R
- 5 Year Warranty** for light arm systems / **5 Year Warranty** for bulb array

AL901, 902, 905, 907, 908, EVG3536N, EVG3532B & QDU5631 Lights (Light Gray Finish Only)

AL901R & BDS2536N (White Finish Only)



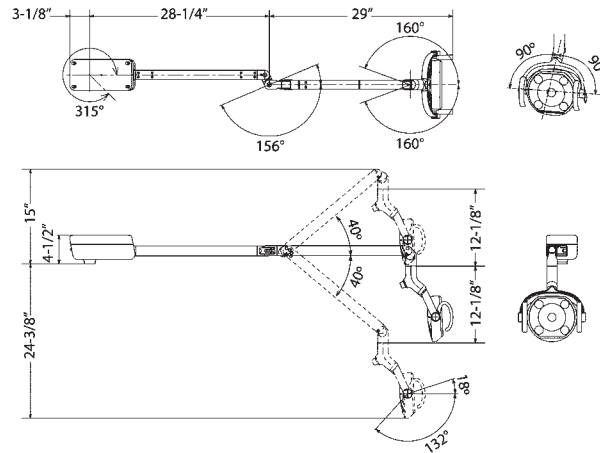
Bel-Halo Mirror Option



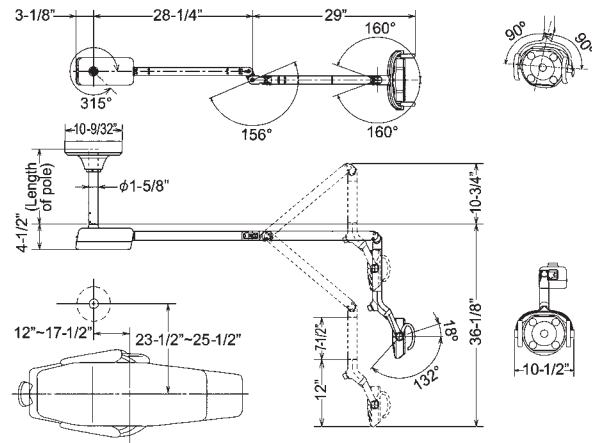
Operatory Lights Clesta

Clesta LED Dimensions

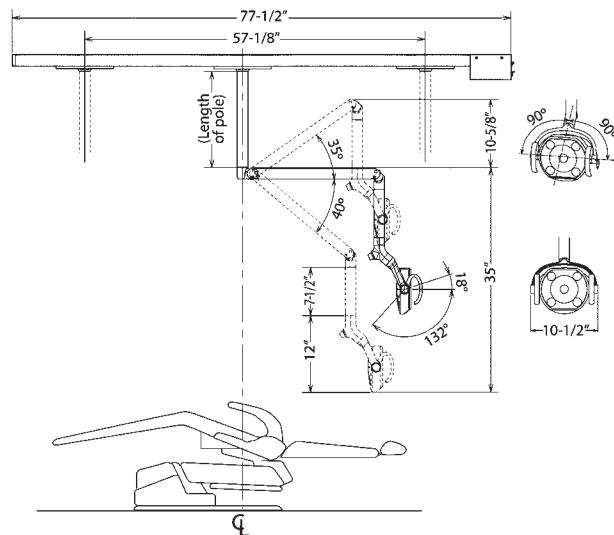
Clesta LED Unit Mount Light: Model AL301R & AL301C



Clesta LED Ceiling Mount Light: Model AL302C



Clesta LED Track Mount Light: Model AL305C



Operatory Lights Clesta

Clesta LED Dental Light			
Model	Mounting Type	Note	
AL301R	Post Mounted Light (White)	Specify Left or Right Hand User (Post not included)	
AL301C	Post Mounted Light (Grey)	Specify Left or Right Hand User (Post not included)	
AL302C	Ceiling Mounted Light	Specify Left or Right Hand User (Specify 8', 8.5', 9', 9.5' or 10' Ceiling Height)	
AL305C	Track Mounted Light	(Specify 8', 8.5', 9', 9.5' or 10' Ceiling Height)	
EVG3533B	L-R Swing Mounted Stand-Alone Light for Mounting on B50N, B50 & B20N Chairs	(Includes Curved Post, Swing Arm & B50N/B50/B20N type Chair Adapter)	
EVG3533Q	L-R Swing Mounted Stand-Alone Light for Mounting on Quolis Q5000 Chairs	(Includes Curved Post, Swing Arm & Quolis type Chair Adapter)	
EVG3535N	Curved Post Light For EVG OTP Units	(Includes Curved Post. "N" Version can be mounted on EVG3500Q, 3500B, 3510Q, 3510B, 3520Q and 3520B ONLY)	
BDS2537N	Curved Post Light For BDS OTP Units	(Includes Curved Post. "N" Version can be mounted on BDS2500, BDS2510 and BDS2520 only)	

Options			
8482B (White only)	48" Straight Light Post with plastic bushing for mounting Belmont post mounted lights to chairs w/o units (requires chair adapter)		
EVG0012 (Grey only)	Straight Post Assembly for attaching Post Mounted Lights onto EVOGUE PMU ONLY		
BDS0012 (White only)	24" Straight Light Post with plastic bushing for mounting Belmont post mounted lights to BDS2500, 2510 and 2520 ONLY		
DS0012-36IN (White only)	36" Straight Light Post with plastic bushing for mounting Belmont post mounted lights to BDU500, 510, 600 and 610 ONLY		
LMKB20KIT (White only)	Light Mount Kit for X-Calibur Series and PROII chairs (includes 8482B 48" light post and 8493B chair adapter)		

Standard Features

- Cool, natural white light for correct color rendering at any intensity setting. Touchless ON/OFF and composite safe mode activation.
- Rectangular Light Pattern: 3-1/8" x 6-1/8" at a focal distance of 25-5/8"
- Stepless Light Intensity Range:

	High Intensity	Medium Intensity	Composite Safe Mode
Light Output:	2,601 FTC	399 FTC	288 FTC
Color Temperature Range:	5000°K		
Output Voltage:	20V		

- Correct color rendering at all intensity settings
- Smooth, 3-Axis positioning easily illuminates patient oral cavity
- Activate light & composite safe mode with touchless sensor
- Input Voltage: 120 V / 60Hz AC
- Bulb Type: LED, 2W (x10)
- Adapter for Belmont post mounted lights included with AL301R
- **5 Year Warranty** for light arm systems / **5 Year Warranty** for bulb array

AL301C, 302C, 305C, EVG3533B, EVG3533Q and EVG3535N (Light Gray Finish Only)

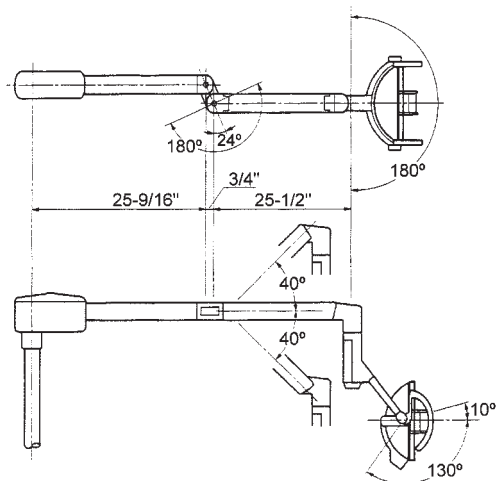
AL301R & BDS2537N Lights (White Finish Only)



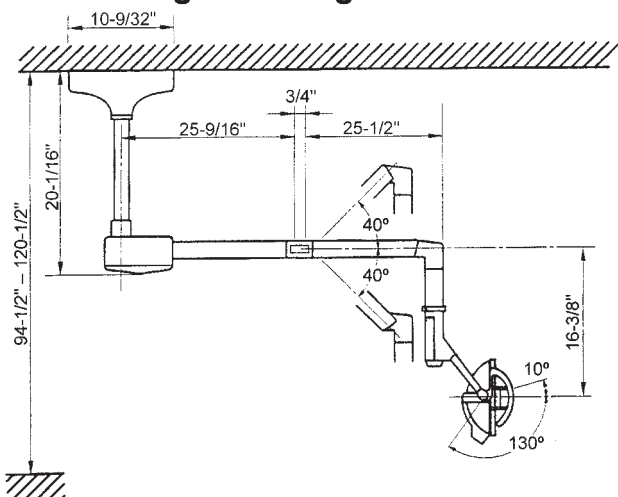
Operatory Lights Clesta

Clesta halogen Dimensions

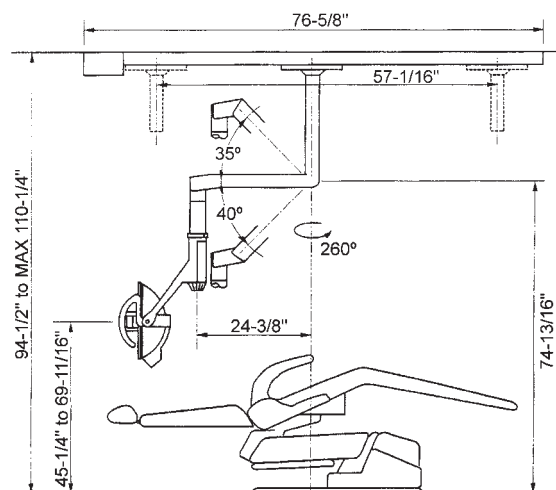
Clesta Unit Mount Light: Model AL511T



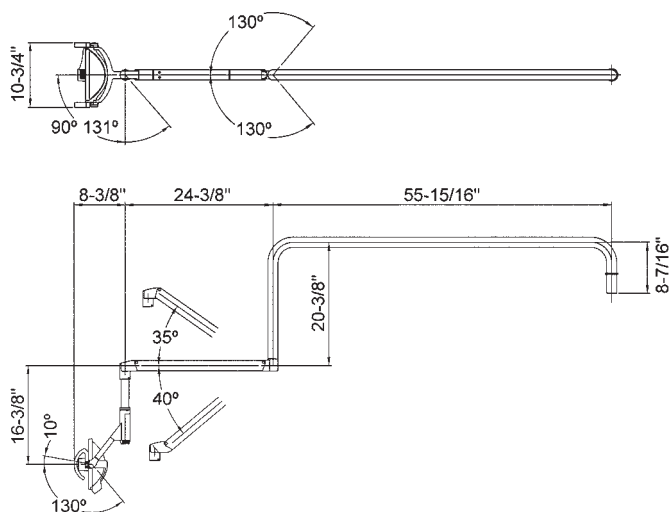
Clesta Ceiling Mount Light: Model AL512T



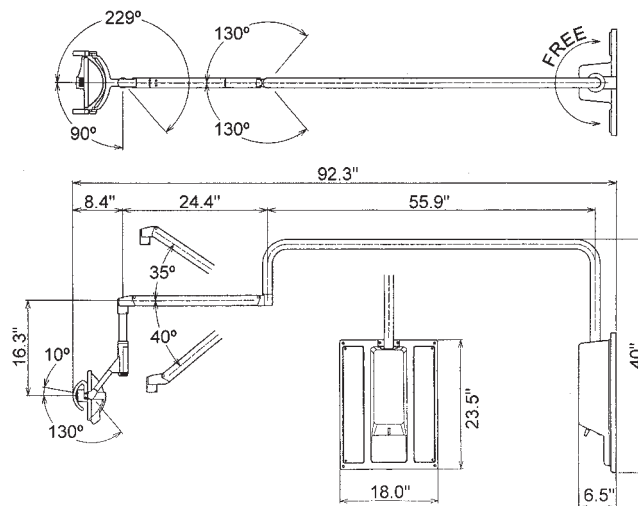
Clesta Track Mount Light: Model AL515T



Clesta Cabinet Mount Light: Model AL517N



Clesta Wall Mount Light: Model AL518T



Operatory Lights Clesta

Clesta (halogen) Dental Light

Model	Mounting Type	Note	
AL511T	Post Mounted Light	(Post not included)	
AL512T	Ceiling Mounted Light	(Specify 8', 8.5', 9', 9.5' or 10' Ceiling Height)	
AL515T	Track Mounted Light	(Specify 8', 8.5', 9', 9.5' or 10' Ceiling Height)	
AL517N	Cabinet Mounted Light	(Mounting kit not Included, see "Light Accessories")	
AL518T	Wall Mounted Light	(Includes Mounting Plate and Post)	
BDS2530	L-R Swing Mounted Light	(Includes Curved Post, Swing Arm & B50N/B50/B20N Chair Adapter)	
BDS2535N	Curved Post Light for BDS OTP Units	(Includes Curved Post. "N" version can be mounted on BDS2500, BDS2510 and BDS2520 only)	

Options			Retail
8482B (White only)	48" Straight Light Post with plastic bushing for mounting Belmont post mounted lights to chairs w/o units (requires chair adapter)		
91200CH	Factory Installation Option for mounting AL517N to D4RH Cabinet (ETL Listing. Must purchase AL517N)		
91201CH	Field Installation Kit for mounting AL517N to D4RH Cabinet (no ETL Listing. Must purchase AL517N)		
LMKB20KIT (White only)	Light Mount Kit for X-Calibur Series & PROII chairs (includes 8482B post and 8493B chair adapter)		
EVG0012 (Grey only)	Straight Post Assembly for attaching Post Mounted Lights onto EVOGUE PMU ONLY		
BDS0012 (White only)	24" Straight Light Post with plastic bushing for mounting Belmont post mounted lights to BDS2500, 2510 & 2520 ONLY		
DS0012-36IN (White only)	36" Straight Light Post with plastic bushing for mounting Belmont post mounted lights to BDU500, 510, 600 and 610 ONLY		

Standard Features

- Simulates Mid-day White Light / Simplified Shade Selection
- Light Pattern: 2.8" x 7.5" at a focal distance of 27.5"
- Light Intensity Settings for Models:

	High Intensity	Medium Intensity	Composite Safe Mode
Light Output:	2,600 FTC	2,000 FTC	740 FTC
Color Temperature Range:	5000°K	4800°K	3600°K
Output Voltage:	24.1V	23V	17.2V

- Touchless ON/OFF Activation For Asepsis
- Input Voltage: 120V / 60Hz AC
- Bulb Type: 24V / 60W Tungsten Halogen
- 1 Spare Bulb included (P/N: L6A)
- Adapter for Belmont post mounted lights included with AL511T
- **5 Year Warranty** (bulb excluded)

Clesta Lights (White Finish Only)





Bel-Halo



Clesta LED



Clesta halogen